

total
CAD®

ZWCAD

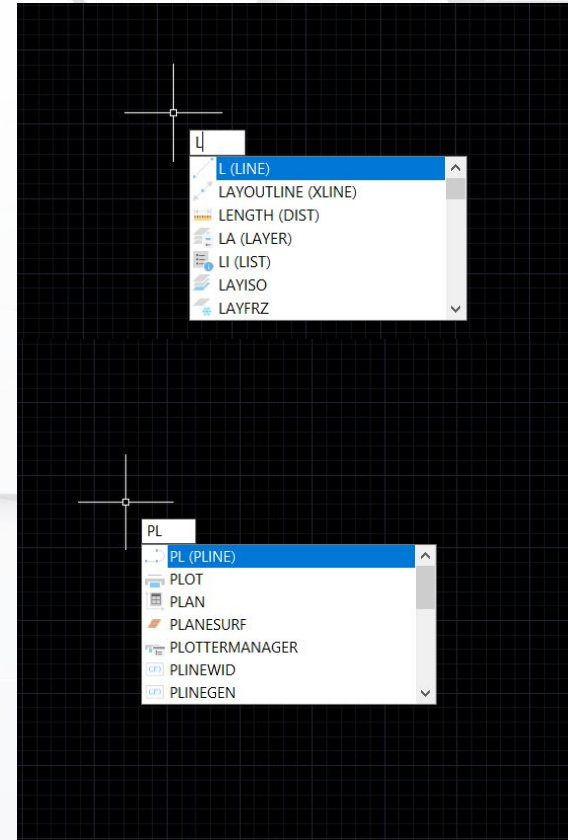
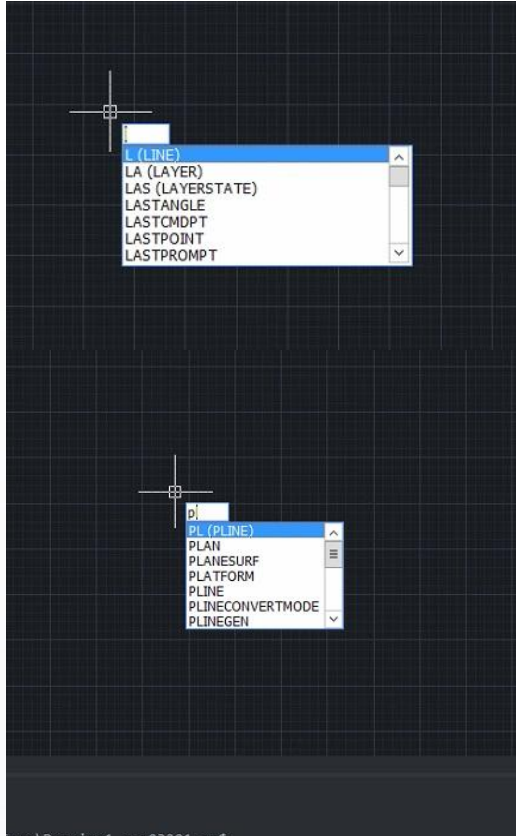


ZWCAD X AUTOCAD

O ZWCAD está mudando a forma como as empresas competem e crescem, proporcionando maior economia no licenciamento de software cad para projetos. Possui **comandos e recursos** padrão do setor, **barras de ferramentas, painel de propriedades, linhas de comando e área de trabalho** muito similar do cad tradicional. Tudo isso por uma fração do custo do AutoCAD®

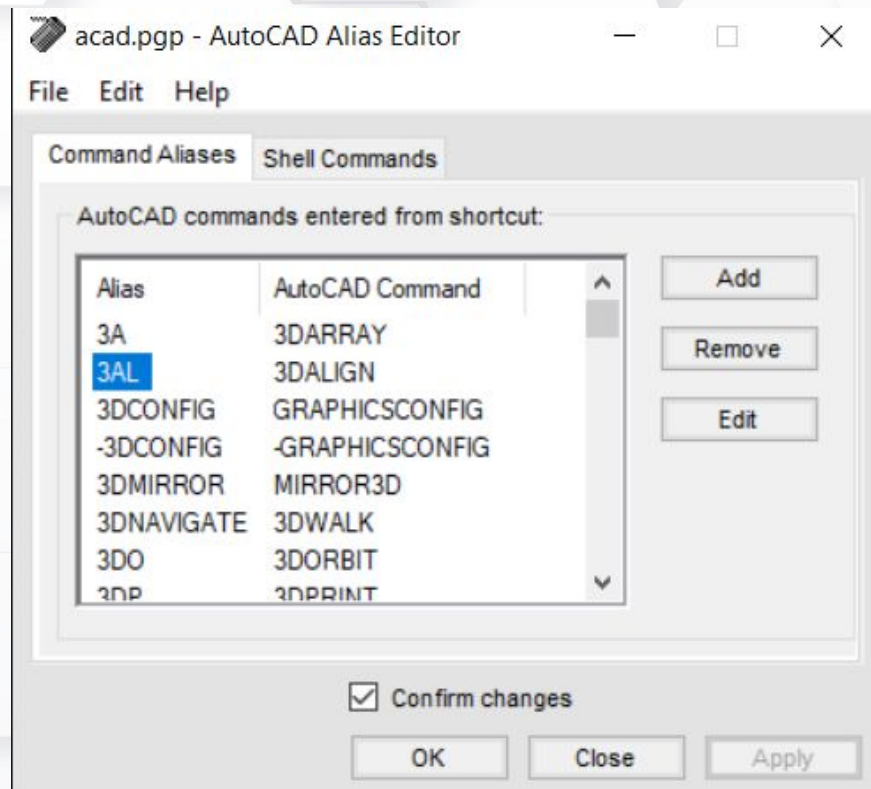
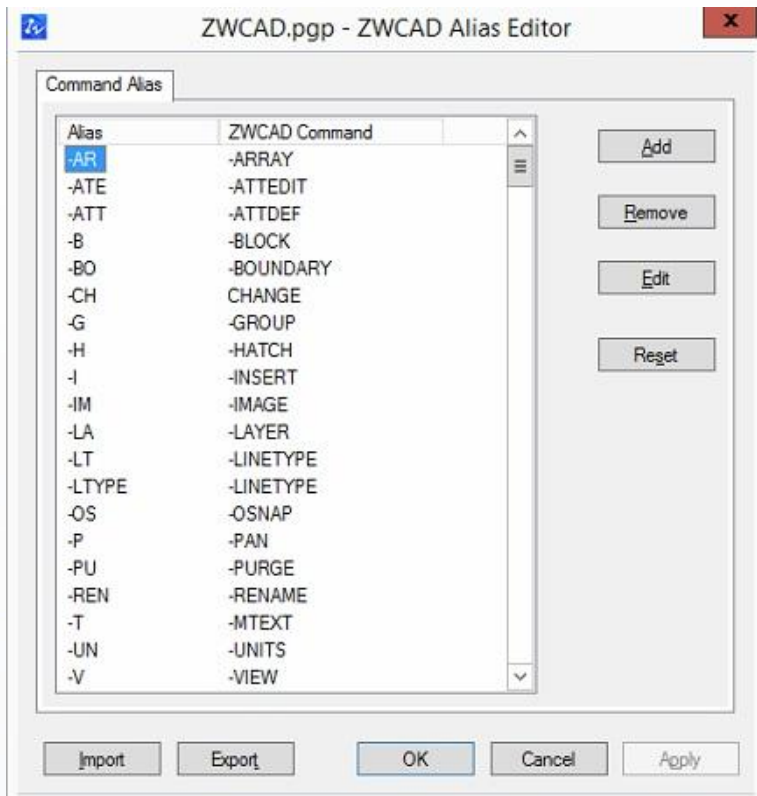
Veja as imagens comparativas à seguir.

ZWCAD



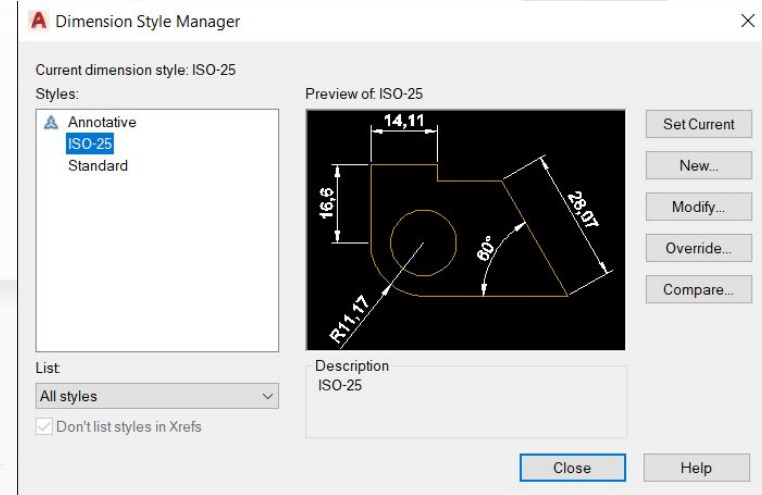
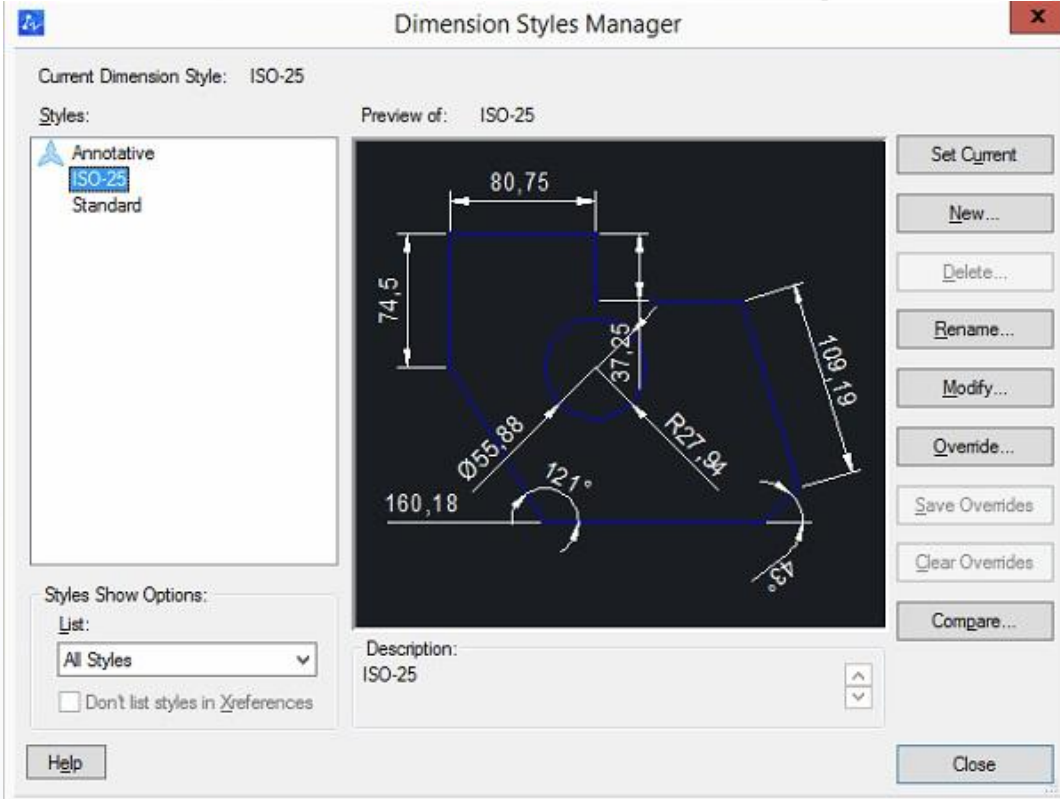
AutoCAD

ZWCAD



AutoCAD

ZWCAD



AutoCAD

ZWCAD

Hatch

Hatch Gradient

Type and pattern
 Type: Predefined
 Pattern: ANGLE
 Color: ByLayer
 Sample: [Pattern preview]

Custom pattern: []

Angle and scale
 Angle: 0
 Scale: 1
 Double Relative to paper space
 Spacing: 1
 ISO pen width: []

Hatch origin
 Use current origin
 Specified origin
 Click to set new origin
 Default to boundary extent
 Bottom left
 Store as default origin

Boundaries

Islands
 Island detection
 Island display:
 Normal Outer Ignore

Dynamic Preview

Preview OK Cancel Help >>

Hatch and Gradient

Hatch Gradient

Type and pattern
 Type: Predefined
 Pattern: ANGLE
 Color: Use Current
 Swatch: [Color swatch]
 Custom pattern: []

Angle and scale
 Angle: 0
 Scale: 1
 Double Relative to paper space
 Spacing: 1
 ISO pen width: []

Hatch origin
 Use current origin
 Specified origin

 Default to boundary extents
 Bottom left
 Store as default origin

Boundaries

Options
 Annotative
 Associative
 Create separate hatches

Draw order:
 Send Behind Boundary

Layer:
 Use Current

Transparency:
 Use Current
 0

Preview OK Cancel Help

AutoCAD

ZWCAD

Options

Current Profile: Default Current Drawing: Drawing1.dwg

Open and Save File **Display** Drafting Selection User Preferences Profiles Plot

Window elements

Color Scheme: **Dark**

- Display scroll bars in drawing window
- Display screen menu
- Use large buttons for toolbars
- Automatic menu loaded
- Show File Tab

Color... Font...

Display resolution

- 1000 Arc and circle smoothness
- 8 Segments in a polyline curve
- 0.5 Rendered object smoothness
- 4 Contour lines per surface

Display performance

- Pan and zoom with raster image
- Highlight raster image frame only
- Apply solid fill
- Show text boundary frame only
- Show silhouettes in wireframe
- Display text as box when unrecognizable
- Not display hatch while zooming

Fading intensity Control

Xref display: 50

In-place edit display: 70

Crosshair size: 5

OK Cancel Apply Help

A Options

Current profile: <<Unnamed Profile>> Current drawing: Drawing1.dwg

Files **Display** Open and Save Plot and Publish System User Preferences Drafting 3D Modeling Selection Profiles

Window Elements

Color scheme: **Dark**

- Display scroll bars in drawing window
- Use large buttons for Toolbars
- Resize ribbon icons to standard sizes
- Show ToolTips
 - 1.000 Number of seconds before display
 - Show shortcut keys in ToolTips
 - Show extended ToolTips
 - 2.000 Number of seconds to delay
 - Show rollover ToolTips
 - Display File Tab

Colors... Fonts...

Display resolution

- 1000 Arc and circle smoothness
- 8 Segments in a polyline curve
- 0.5 Rendered object smoothness
- 4 Contour lines per surface

Display performance

- Pan and zoom with raster & OLE
- Highlight raster image frame only
- Apply solid fill
- Show text boundary frame only
- Draw true silhouettes for solids and surfaces

Crosshair size

5

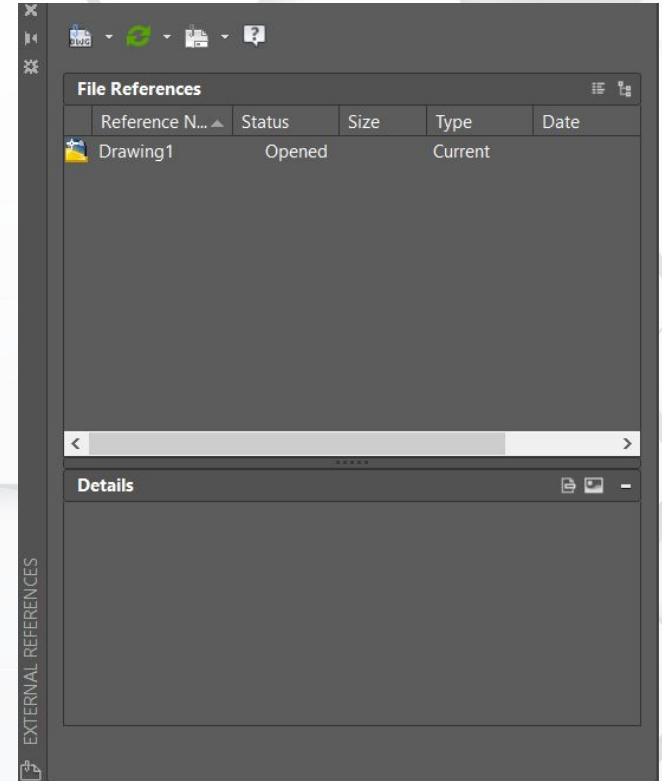
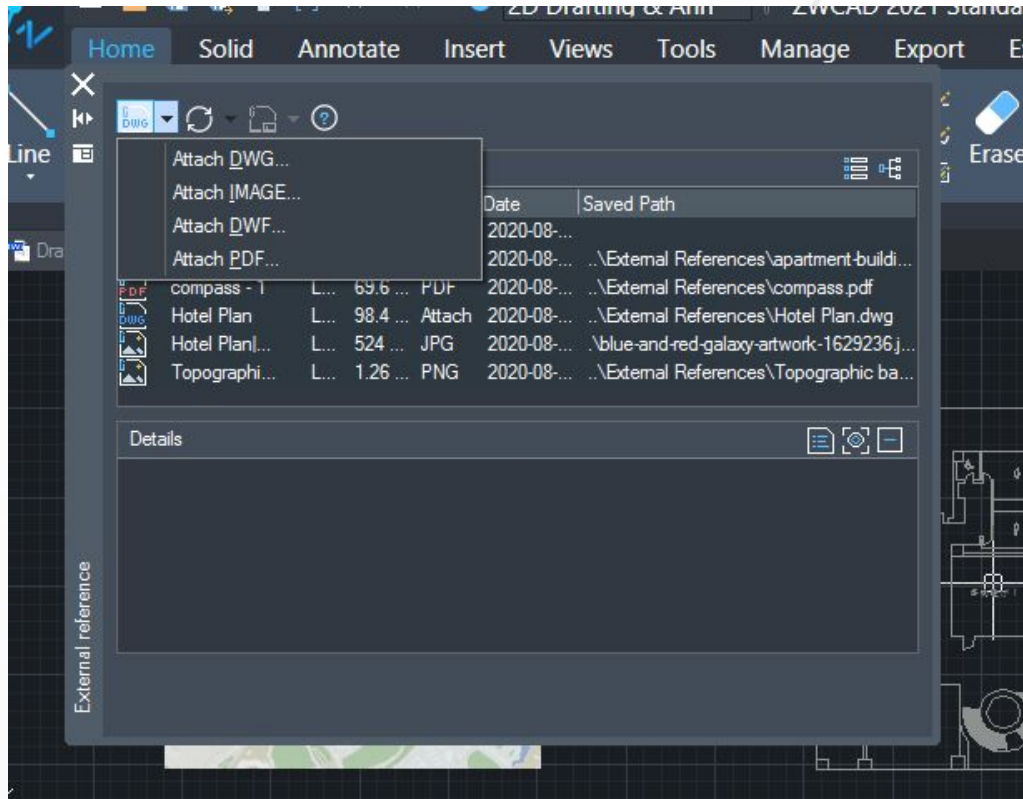
Fade control

Xref display: 50

In-place edit and annotative representations: 70

OK Cancel Apply Help

ZWCAD



AutoCAD

TotalCAD

total
CAD®

A totalCAD é especializada em softwares para projetos, sempre com soluções de baixo custo e alto desempenho que atendem ao mercado de arquitetura, engenharia, construções e projetos industriais.

No decorrer dos anos, a totalCAD ampliou sua abrangência de atuação oferecendo serviços com uma sólida estrutura voltada para treinamentos (presenciais e online), palestras, certificação em CAD, desenvolvimento de aplicativos, cursos patrocinados, road shows, etc.



Com uma base de mais de 25.000 usuários no Brasil, a totalCAD é distribuidora exclusiva de algumas das marcas mais conceituadas em soluções para projetos.

Ainda tem dúvidas?

Entre em contato com a nossa especialista em ZWCAD.

**Endy Resta**

Customer Success

Especialista em CAD 2D

atendimento3@totalcad.com.br

OBRIGADO!

Para maiores informações entre em contato conosco através dos nossos canais:

<https://totalcad.com.br/suporte/>

<https://totalcad.com.br/>



(11) 4878-6500

@totalcad_brasil

@zwcad.brasil



totalcadbrasil



totalcadbrasil

